

Arbor Commons Site Layout

New Development - Midtown Wilmington NC



Arbor Commons Site Information

- New Proposed Grocery Anchored Development in Midtown Wilmington, NC
- Located on 17th street near the College Road (i-40) intersection
- Property is going to be rezoned to CB Conditional
- Property will be leased/sold in three lots.
 - Lot 1 - Under Contract - 3.97 acres
 - Lot 2 - Retail Center - 10,300 +/- SF - .079 acres
 - Lot 3 - Office Pad - 45,000 sf over three stories - 2.79 acres
- Property will be delivered graded with Stormwater, utilities and access in place.



5129 Oleander Drive, Suite 103
Wilmington NC 28403
www.eccrenc.com
(910) 399 4602

Arbor Commons Site Demographics

Radius	Income	Population	Households
1	\$76,071.00	9,077	3,913
3	\$75,199.00	55,830	25,647
5	\$64,822.00	118,453	55,033.00



5129 Oleander Drive, Suite 103
Wilmington NC 28403
www.eccrenc.com
(910) 399 4602

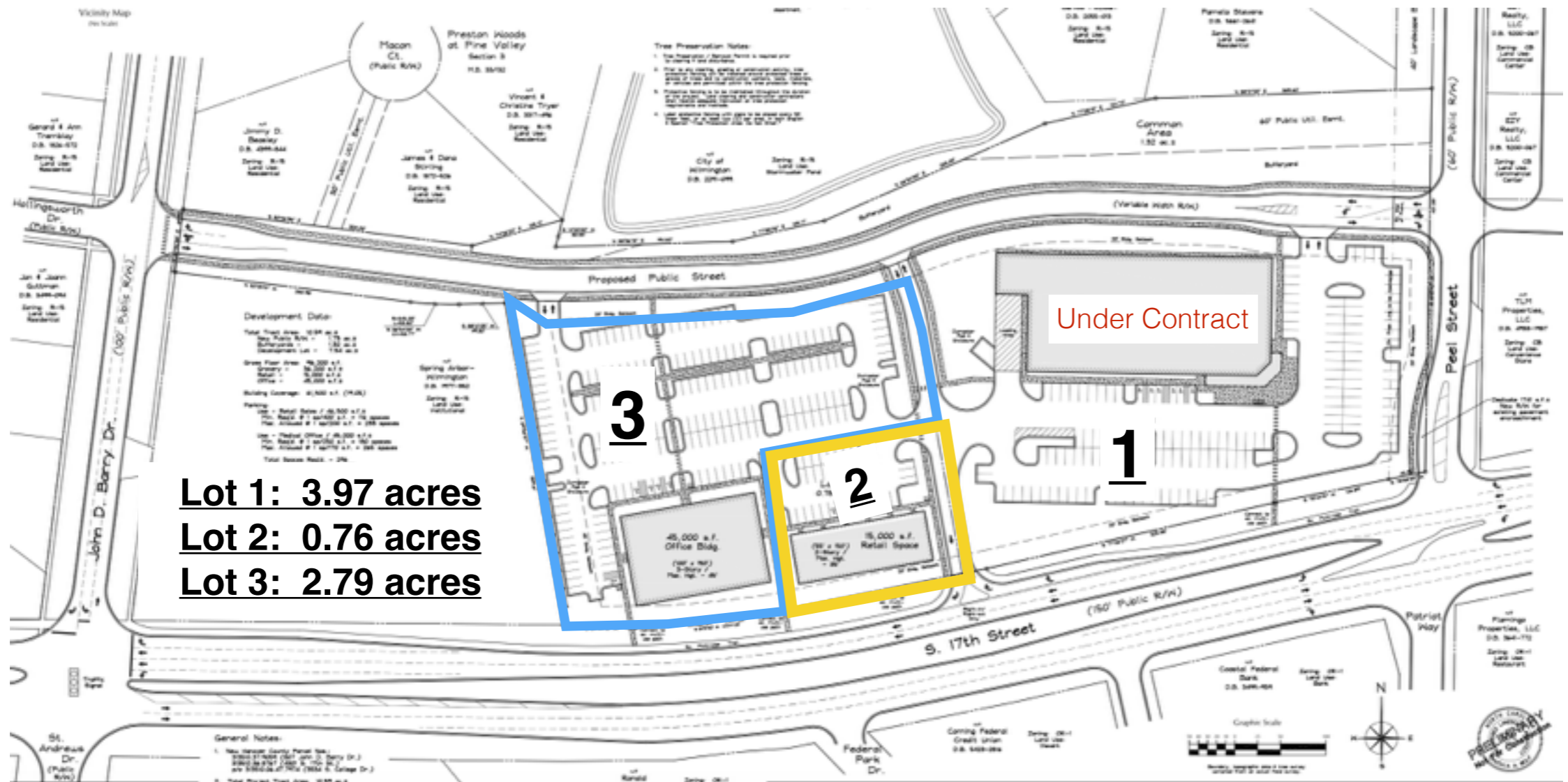
Arbor Commons Site Information

- Property Is surrounded by new development.
 - Publix Center to the North
 - Proposed Aldi to the East
 - New Movie Theater and Mixed Use Center to the West.
- Property maps and layout shown next.



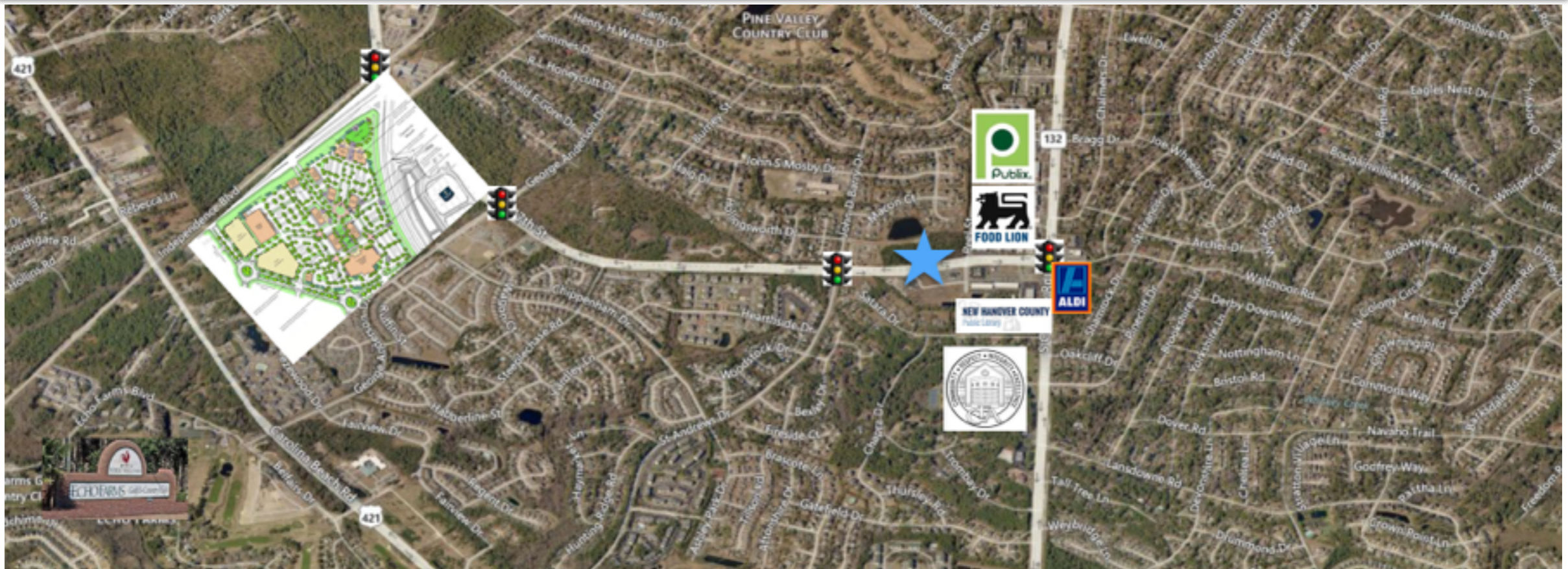
5129 Oleander Drive, Suite 103
Wilmington NC 28403
www.eccrenc.com
(910) 399 4602

Arbor Commons Site Layout New Development - Midtown Wilmington NC



Arbor Commons Site Layout

New Development - Midtown Wilmington NC



Location and New Development Map

Call (910) 399 4602

For more information about Arbor Commons.
Thanks for your interest.
Eastern Carolinas Commercial Real Estate.