

Building lot All utilities for 10,000 +/- SF building, Supply



17 Doctors Cir SW, Supply, NC 28462

Listing ID: 30045125
 Status: Active
 Property Type: Vacant Land For Sale
 (also listed as Office, Special Purpose)
 Possible Uses: Office
 Gross Land Area: 0.57 Acres
 Sale Price: \$160,000
 Unit Price: \$280,701 Per Acre
 Sale Terms: Cash to Seller

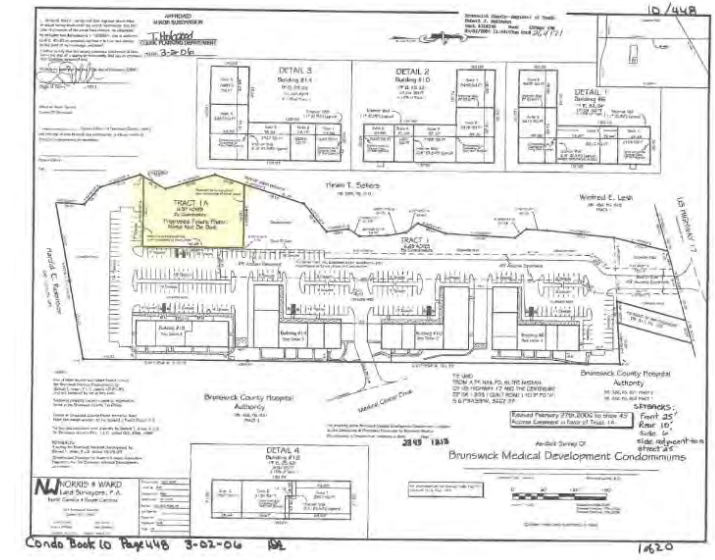
Overview/Comments

In Brunswick County, Supply at Brunswick Medical Park a .57 acre parcel available. This office complex is adjacent to the former Brunswick County Hospital Building.

Storm water, utilities, parking lot all installed ready to go vertical, part of a 45,000 SF office park housing Novant, VA Clinic and Multi-pal Dr. offices. Land, graded Engineered pad ready for a 10,000 SF Building, owner will build to suit. Office or Medical

Storm Water, Parking Lot, Water and Sewer available, cleared and ready to go vertical.

Will Build to suite, owner may finance lot sale



General Information

Taxing Authority: Brunswick County
 Tax ID/APN: 167LA018
 Possible Uses: Office
 Zoning: CLD
 Sale Terms: Cash to Seller

Area & Location

Property Located Between: Ocean Hwy W and Medical Center Drive SW
 Property Visibility: Good
 Legal Description: TR-1A .57AC BRUNSWICK MED DEVEL CB-10/448
 Largest Nearby Street: Ocean Hwy W Hwy 17
 Feet of Frontage: 194
 Site Description: IN CITY LIMITS: No
 Area Description: Located in office complex adjacent to former Brunswick County Hospital

Land Related

Lot Frontage: 194'
 Lot Depth: 135.8'
 Zoning Description: CLD
 Topography: Level
 Available Utilities: Electric, Water, Sewer, Storm Drain, Cable, Internet Access
 Water Service: Municipal
 Sewer Type: Municipal

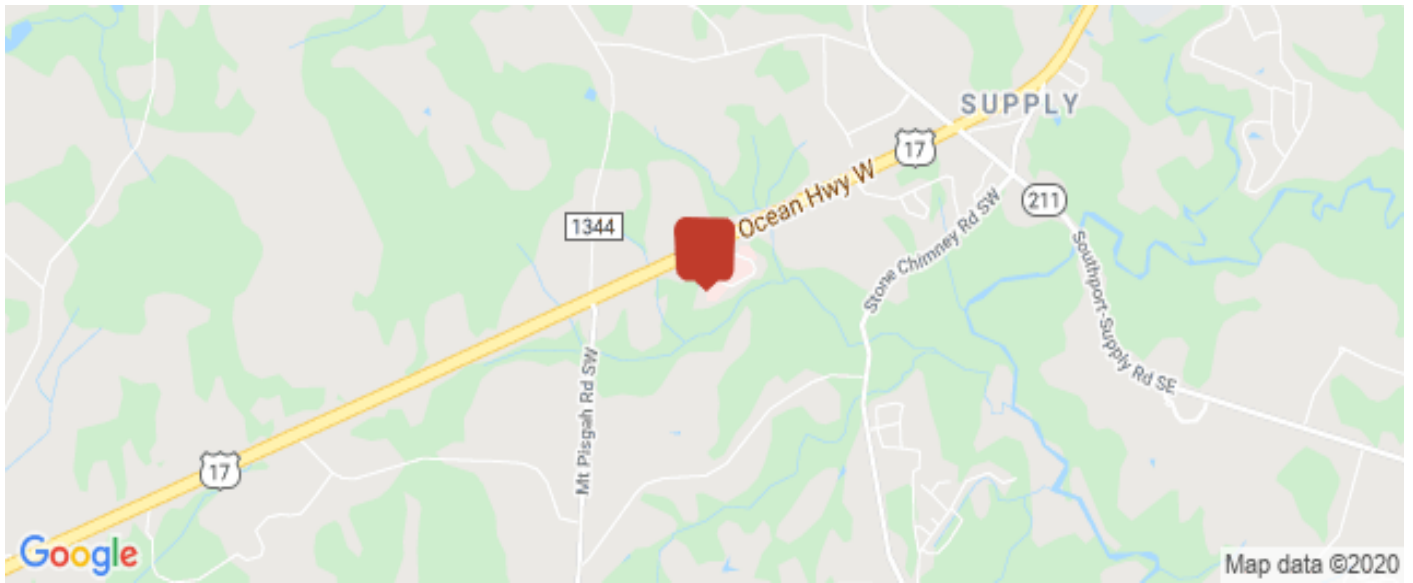
Location

Address: 17 Doctors Cir SW, Supply, NC 28462
 County: Brunswick
 MSA: Myrtle Beach-Conway-North Myrtle Beach



**Eastern Carolinas
 Commercial**
 REAL ESTATE

4922 Randall Parkway Suite D Wilmington, NC
 28403 WWW.ECCRENC.COM
 O: 910.399.4602
 F: 910.399.4675



Property Images



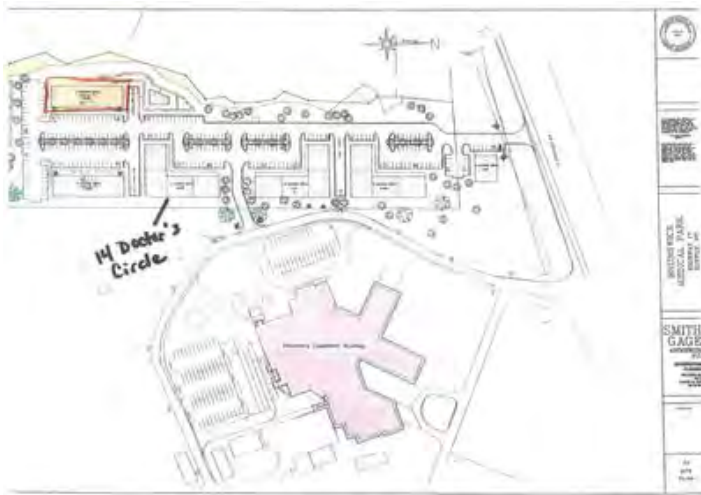
**Eastern Carolinas
Commercial
REAL ESTATE**

4922 Randall Parkway Suite D Wilmington, NC
28403 WWW.ECCRENC.COM

O: 910.399.4602

F: 910.399.4675

All information contained herein has been obtained from sources deemed reliable. However, no warranty or guarantee is made as to the accuracy of the information.



Property Contacts



Garry Silivanch

Eastern Carolinas Commercial Real Estate
 910-399-4602 [O]
 garry@eccrenc.com



Bernadette Silivanch

Eastern Carolinas Commercial Real Estate
 910-617-2198 [O]
 bernybms@gmail.com



**Eastern Carolinas
 Commercial**
 REAL ESTATE

4922 Randall Parkway Suite D Wilmington, NC
 28403 WWW.ECCRENC.COM
 O: 910.399.4602
 F: 910.399.4675