

Industrial- 8,000 +/- SF Business Park For Lease

3310 Fredrickson Rd, Wilmington, NC 28401

Listing ID: 30298835
Status: Private
Property Type: Industrial For Lease
Industrial Type: Industrial-Business Park
Contiguous Space: 18,000 SF
Total Available: 18,000 SF
Lease Rate: \$7.25 PSF (Annual)
Base Monthly Rent: \$10,875
Lease Type: NNN
Loading: 4 Docks, 4 Doors
Office SF: 2,800 SF
Drive-In Bays: 4 Bays



Overview/Comments

—CLIMATE CONTROLLED Excellent condition, Industrial space for lease. 18,000 S/F 12,000 S/F warehouse 2,800 S/F office and 2,800 production space. Warehouse ceiling heights 16' and 25'. Office 10' and 12'. Five dock high doors. One drive in door. Entire building temperature controlled. Fenced secured lot. Ample yard space. Triple NNN Lease

DIRECTIONS: Off of Hwy 421, near I 140 bypass. From Cape Fear Bridge take Hwy 421 N then left on Sutton Steam Plant Road , right on Fredrickson. Property on the right.

LANDLORD PAYS: None

TENANT PAYS: Building Insurance,Ext Building Mainten,Electric,HVAC Reports,Janitorial Services,Liability Insurance,Pest Control,Taxes,Trash RMVL,Water,Yard Maintenance

General Information

Taxing Authority: New Hanover County Wilmington
Tax ID/APN: R03200-002-020-000
Industrial Type: Industrial-Business Park
Zoning: NEW HANOVER COUNTY: I-2

Gross Building Area: 18,000 SF
Building/Unit Size (RSF): 18,000 SF
Land Area: 2.20 Acres

Available Space

Suite/Unit Number: 18,000 Industrial Available Space
Space Available: 18,000 SF
Minimum Divisible: 18,000 SF
Maximum Contiguous: 18,000 SF
Space Type: Relet
Date Available: 07/18/2018
Lease Rate: \$7.25 PSF (Annual)
Lease Type: NNN

CAM Expenses: \$1 PSF (Annual)
Rent Escalators: Step-Up Lease
Rent Concession: 3%
Office SF: 2,800 SF
Parking Spaces: 20
Loading Docks: 4
Loading Doors: 4
Drive In Bays: 4

Space Description 18,000 S/F 12,000 S/F warehouse 2,800 S/F office and 2,800 production space. Warehouse ceiling heights 16' and 25'. Office 10' and 12'. Five dock high doors. One drive in door. Entire building temperature controlled. Fenced secured lot. Ample yard space.

Area & Location

Property Located Between: Sutton Steam Plant Road & Fredrickson Road
Highway Access: I-140, US HWY 421, and US-17

Airports: Wilmington International Airport
Site Description: IN CITY LIMITS: No RAIL SERVICE: Rail passes along side of property FACILITY EXPANDABLE: Yes
PERIMETER FENCING: Yes



**Eastern Carolinas
Commercial**
REAL ESTATE

LANDMARK DRIVE, UNIT 4 WILMINGTON, NC 28412

WWW.ECCRENC.COM

O: 910.399.4602

F: 910.399.4675

All information contained herein has been obtained from sources deemed reliable. However, no warranty or guarantee is made as to the accuracy of the information.

Area Description CLOSEST AIRPORT NAME: ILM 4 miles DISTANCE TO AIRPORT: 4 CLOSEST HIGHWAY NAME: Hwy 421 & I-140, Just minutes from the I-140 on off ramp on 421, direct access to Interstate 40 in 5 minutes. DISTANCE TO HIGHWAY: 1

Building Related

Total Number of Buildings:	1	Construction/Siding:	Steel Frame
Number of Stories:	2	Total Parking Spaces:	40
Office Space SF:	2,800 SF	Passenger Elevators:	0
Property Condition:	Good	Freight Elevators:	0
Year Built:	1987	Interior Description:	Electric Provider: Duke Energy

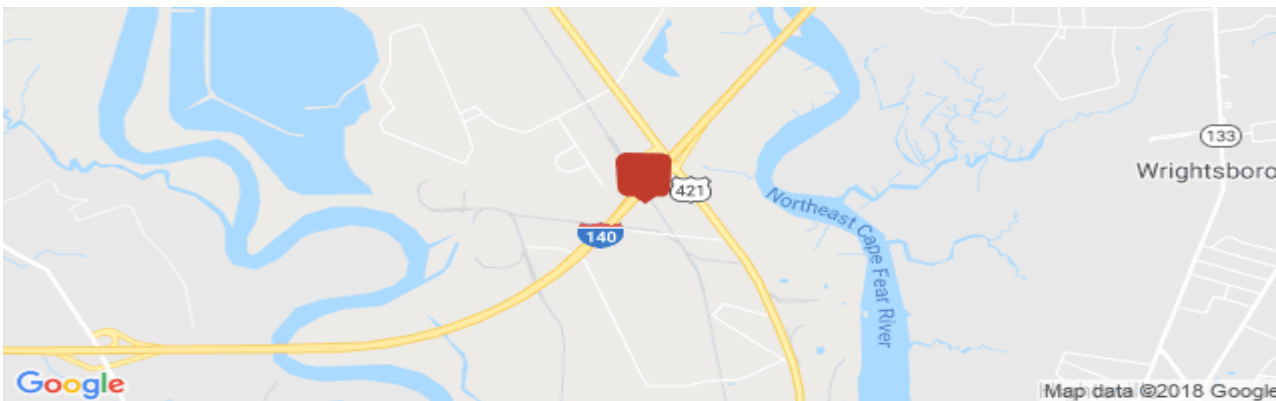
Land Related

Water Service:	Well
Sewer Type:	Septic
Legal Description:	(2.16 ACRES) LOT 2 MCCALL INDUSTRIAL PARK

Zoning Description The I-2 zoning district is established to set aside areas of the County for a full range of manufacturing, fabrication, assembly, warehousing, and distribution uses associated with heavy industrial land uses where heavy industry can find suitable sites served by rail, waterway and highway transportation. The district is also established to subsequently protect nonindustrial districts situated outside the district and minimize environmental impacts caused by the uses within the district. Outdoor operations and storage are appropriate for this district provided that the district standards are met. Certain uses within the I-2 district shall require a special use permit as specified in the Table of Permitted Uses. No I-2 District shall be less than five (5) acres in area.

Location

Address:	3310 Fredrickson Rd, Wilmington, NC 28401
County:	New Hanover
MSA:	Wilmington



Property Images



3310 Fredrickson Aerial



Google Earth Aerial



**Eastern Carolinas
Commercial**
REAL ESTATE

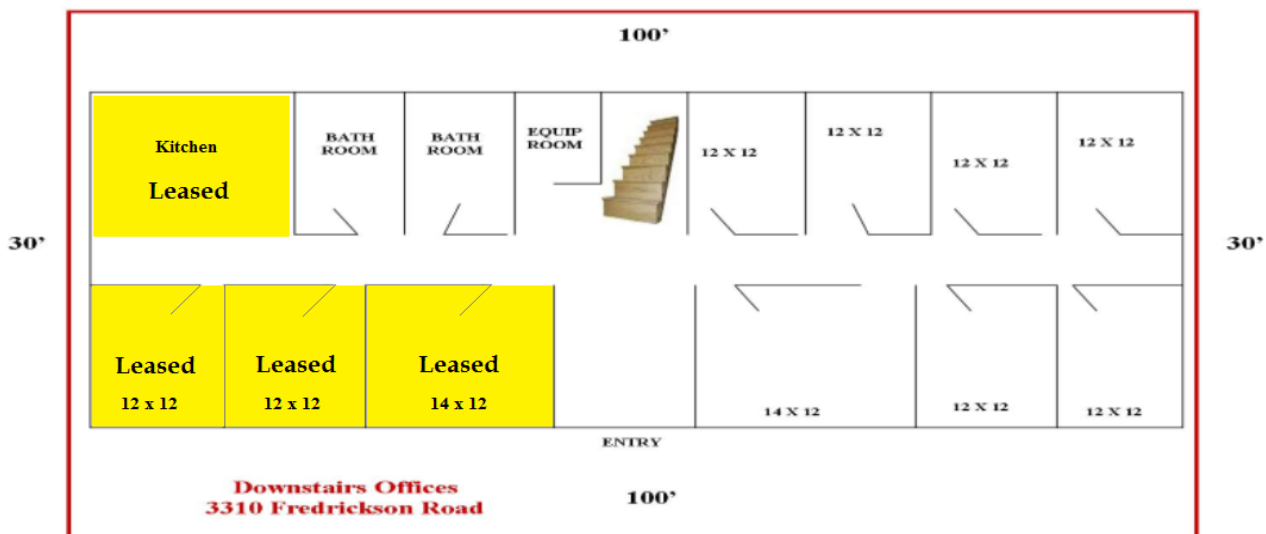
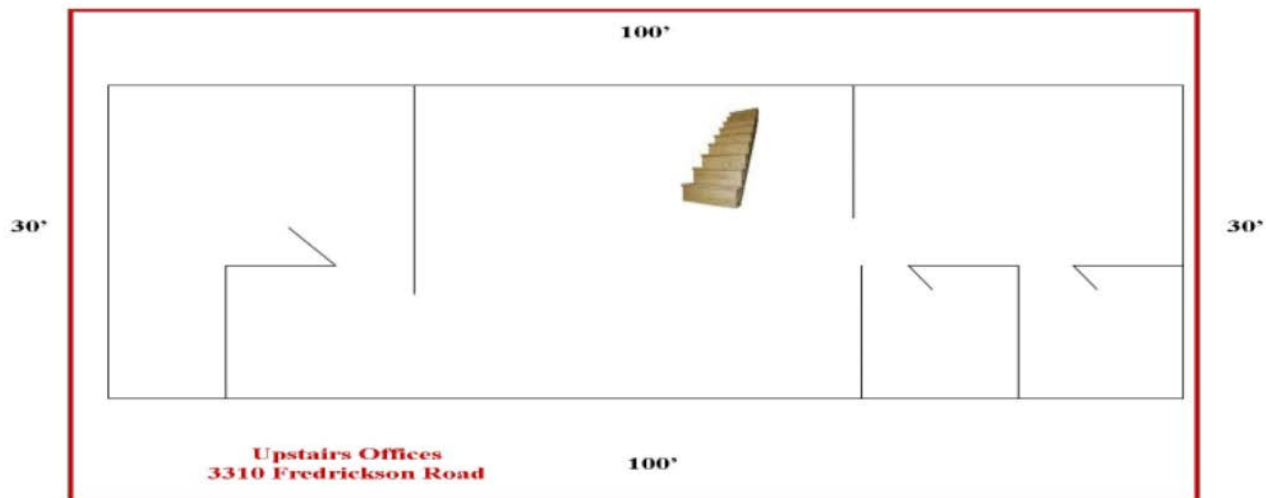
432 LANDMARK DRIVE, UNIT 4 WILMINGTON, NC 28412

WWW.ECCRENC.COM

O: 910.399.4602

F: 910.399.4675

All information contained herein has been obtained from sources deemed reliable. However, no warranty or guarantee is made as to the accuracy of the information.



Space Layout

For More Information Contact:
 Garry Silivanch
 (910) 399-4602
garry@eccrenc.com



**Eastern Carolinas
 Commercial**
 REAL ESTATE

432 LANDMARK DRIVE, UNIT 4 WILMINGTON, NC 28412
WWW.ECCRENC.COM
 O: 910.399.4602
 F: 910.399.4675

All information contained herein has been obtained from sources deemed reliable. However, no warranty or guarantee is made as to the accuracy of the information.